

WASHINGTON'S POSTSECONDARY ENROLLMENT CRISIS INTENSIFIES

A HORIZON OF OPPORTUNITY AHEAD FOR WASHINGTON STATE

Employers will add **373,000 net new jobs** over the next five years.

State's anticipated annual **job growth rate of 2.1%** will far outpace the nation.

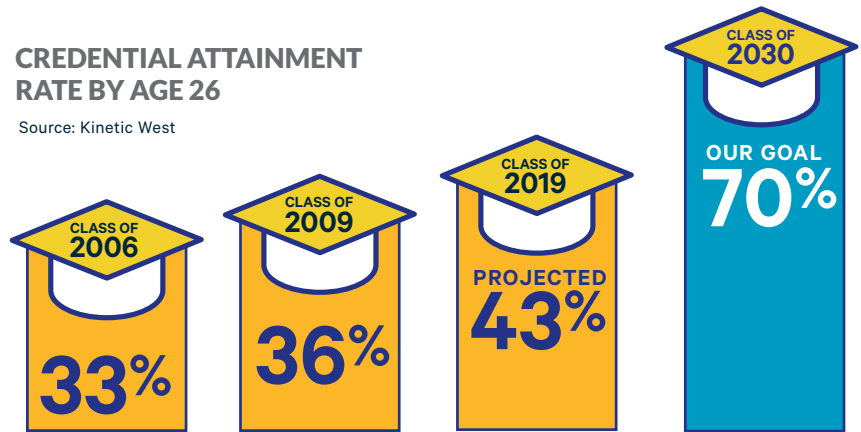
Estimated 70% of jobs will require or be filled by workers with a post-high school credential.

DRAMATIC GROWTH IN CREDENTIAL ATTAINMENT IS NEEDED

Even before the pandemic, too few of our young people, particularly young people of color and those from low-income backgrounds, were enrolling in postsecondary education and completing credentials.

CREDENTIAL ATTAINMENT RATE BY AGE 26

Source: Kinetic West



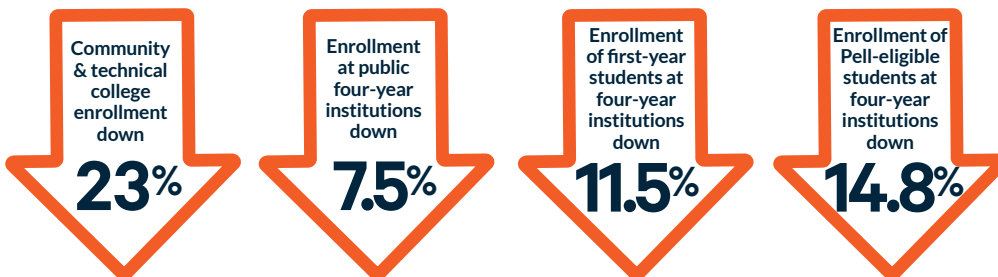
POSTSECONDARY ENROLLMENT IN WASHINGTON HAS BEEN FALLING SHORT

Benchmark data comparing the high school classes of 2006 and 2019 indicate progress at two key junctures—high school graduation and postsecondary completion. But Washington went backward on postsecondary enrollment during that same period.

	HS CLASS OF 2006	HS CLASS OF 2019	RATE OF CHANGE
HIGH SCHOOL GRADUATION	75%	84%	+9 POINTS
POSTSECONDARY ENROLLMENT	78%	76%	-2 POINTS
POSTSECONDARY COMPLETION	56%	63%*	+7 POINTS

* Postsecondary completion rate for class of 2019 projected.

RECENT ENROLLMENT DROPS NOW SIGNAL CRISIS



Data comparing Fall 2019 and Fall 2021 enrollment is compiled from SBCTC, CWU, EWU, Evergreen State College, UW, WSU, and WWU. Data from four-year institutions includes resident undergraduate enrollment only.

INCREASING THE POSTSECONDARY ENROLLMENT RATE IS OUR GREATEST OPPORTUNITY TO ENSURE WASHINGTON STUDENTS ARE READY FOR OPPORTUNITIES THAT AWAIT.

It will require targeted, thoughtful, and direct outreach to better prepare, encourage, and support students to and through postsecondary education.

LEARN MORE AT WAROUNDTABLE.COM.



WASHINGTON ROUNDTABLE